

We can all keep unwanted pests and diseases out of New Zealand

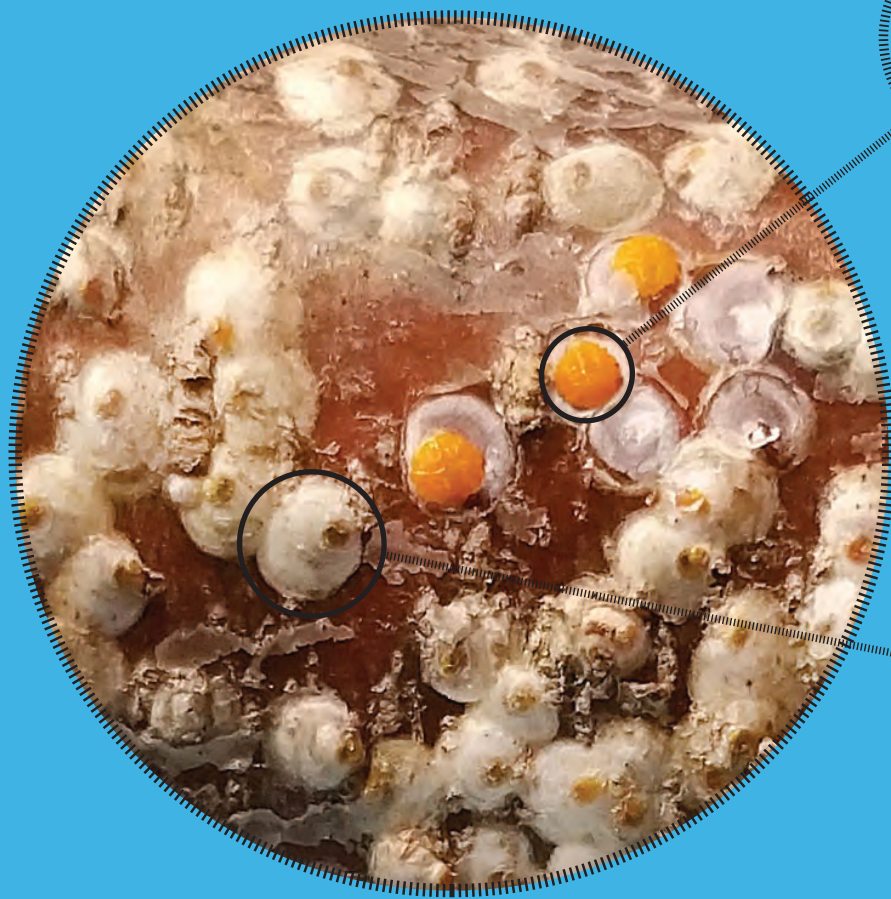
**2023
Calendar**

**A Kiwifruit Growing
Community Committed to
Biosecurity Excellence**

Image: Courtesy of Zespri Image Library



White Peach Scale



Pink-yellow
in colour

Scale are
pear-shaped
and 2.0 to 2.5
mm long

0 mm

2 mm

2.5 mm



I CAN ENTER
NZ ON:

Has been
intercepted on
imported fruit,
including at the
supermarket



WHITE PEACH SCALE IS DISTRIBUTED
ACROSS THE WORLD



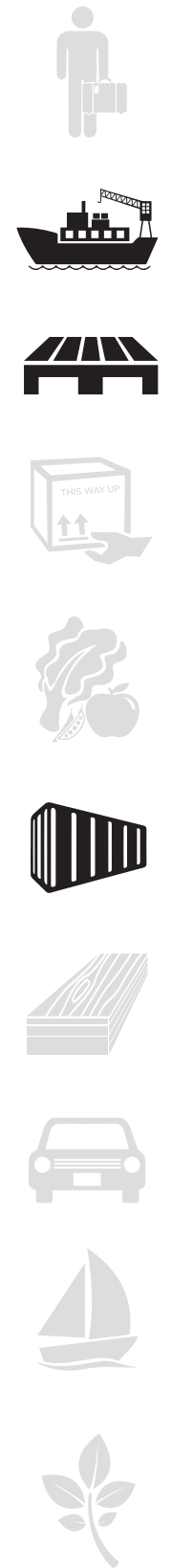
IF YOU COME ACROSS ONE OF THESE:
CATCH IT! SNAP IT! REPORT IT!

0800 665 825

OR CONTACT MPI on: **0800 80 99 66**

Asian Giant Hornet

Likely hitched a ride to the US/ Canada recently on a cargo ship



I CAN ENTER NZ ON:

Light orange head

Orange and brown/black striped body

Stinger is just over a cm long

0 cm

3.5cm

5 cm

Queens can be bigger than 5 cm



ASIAN GIANT HORNET CAN TRAVEL FROM

- Japan
- South Korea
- Taiwan
- China
- North America

IF YOU COME ACROSS ONE OF THESE:
CATCH IT! SNAP IT! REPORT IT!
0800 665 825
OR CONTACT MPI on: **0800 80 99 66**

Spotted Lanternfly

Adult are up to 2.5cm long and 1.2cm wide.

3 cm

0 cm



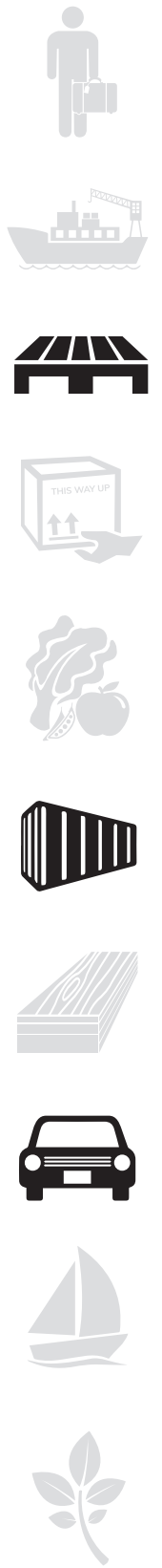
Grey forewing with black spots



Hind wings have red and black patches

I CAN ENTER NZ ON:

Photo credit: Pennsylvania Department of Agriculture.



LANTERNFLY CAN TRAVEL FROM

- China
- India
- Vietnam
- Korea
- USA



IF YOU COME ACROSS ONE OF THESE:
CATCH IT! SNAP IT! REPORT IT!

0800 665 825

OR CONTACT MPI on: **0800 80 99 66**

Fall Armyworm



Brown-grey forewings, cream hind wings

ADULTS

16-18mm long
38mm wingspan



I CAN ENTER NZ ON:

Go brown-black as they mature



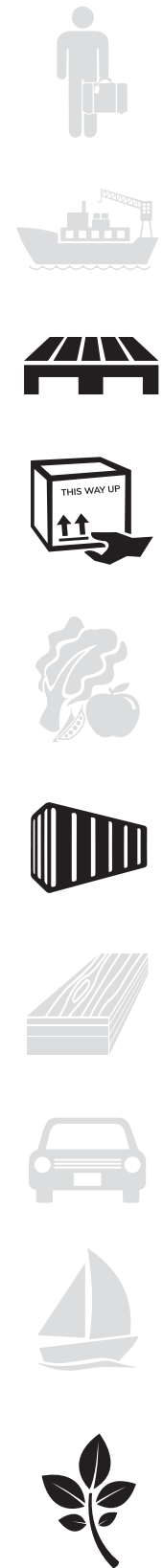
LARVAE

Light green to brown. Darker, bigger head

0 cm

3.4 cm

5 cm



FALL ARMYWORM MOTH CAN TRAVEL FROM

- North America - South America - Australia
- Africa - Asia

IF YOU COME ACROSS ONE OF THESE:
CATCH IT! SNAP IT! REPORT IT!
0800 665 825
OR CONTACT MPI on: **0800 80 99 66**

Biosecurity Planning

Build a biosecurity plan in 5 easy steps

As a grower or person in charge of an orchard, you need to have a plan that covers the steps you take when moving machinery, tools and plant material on and off your property, how you trace and record all these things, how you manage the risks that might already be present, and the steps you should take if you see anything unusual.

By having a plan written down you can get everybody who's involved in your business on the same page.

How do I complete a biosecurity plan?

KVH has designed a biosecurity plan template that you can personalise and complete either on paper or online, depending on your preference. Both versions require:

- the name of the person completing the plan;
- the KPIN or KPINs the plan is being completed for;
- a dated declaration that the person completing the plan is the person responsible, and that the information provided is true and correct in regard to actions taken to manage biosecurity risk.

You need to keep your plan on file so that you can show it to auditors. If you choose to complete your plan online, you can then save a PDF copy.



Fill in your plan online at
www.kvh.org.nz



Prefer handwriting? Fill in a printed booklet from www.kvh.org.nz or ask for one to be posted to you by phoning 0800 665 825. Your post-harvest team will also be able to help.

Resources and Support

Stay in touch

KVH offers a range of ways for you to keep up to date with all things related to kiwifruit biosecurity and vine health:

- We publish regular articles in our online Newsroom at kvh.org.nz
- Sign up to our e-news Bulletin, delivered directly to your mailbox
- Follow us on Twitter (@KVHNZ), Facebook (Kiwifruit Vine Health—KVH) or YouTube (Kiwifruit Vine Health—KVH)
- Listen to our Snapshot podcasts (Kiwifruit Vine Health) for free on iTunes or Soundcloud.

Email info@kvh.org.nz to subscribe or for more information.

Free biosecurity orchard signs

KVH-produced corflute biosecurity signage is available for orchard entry points free of charge.

These signs are to raise biosecurity awareness for people entering the orchard, and to help you set agreed expectations for best biosecurity practice.

Contact your post-harvest or email info@kvh.org.nz with a postal address and we will send signs to you.



Spongy Moth



MALE
30–40mm
wingspan



FEMALE
90mm
wingspan



Egg Mass

LOOK OUT
FOR EGG
MASSES ON:

-
-
-
-
-
-
-
-
-
-



FORMERLY KNOWN AS THE ASIAN GYPSY MOTH,
SPONGY MOTH CAN TRAVEL FROM

– China – Japan – Russia – South Korea



IF YOU COME ACROSS ONE OF THESE:
CATCH IT! SNAP IT! REPORT IT!

0800 665 825

OR CONTACT MPI on: **0800 80 99 66**

Yellow Peach Moth



Pale yellow wings with black spots

ADULTS
have a wingspan up to 3cm

I CAN ENTER NZ ON:

LARVAE
cause damage by boring holes in fruit, leaves and stems



LARVAE
Buff coloured with a dark head and about 2cm long



YELLOW PEACH MOTH IS FOUND IN

- China
- Korea
- Japan
- India
- Pakistan
- South East Asia
- Australia



IF YOU COME ACROSS ONE OF THESE:
CATCH IT! SNAP IT! REPORT IT!

0800 665 825

OR CONTACT MPI on: **0800 80 99 66**

Brown Marmorated Stink Bug

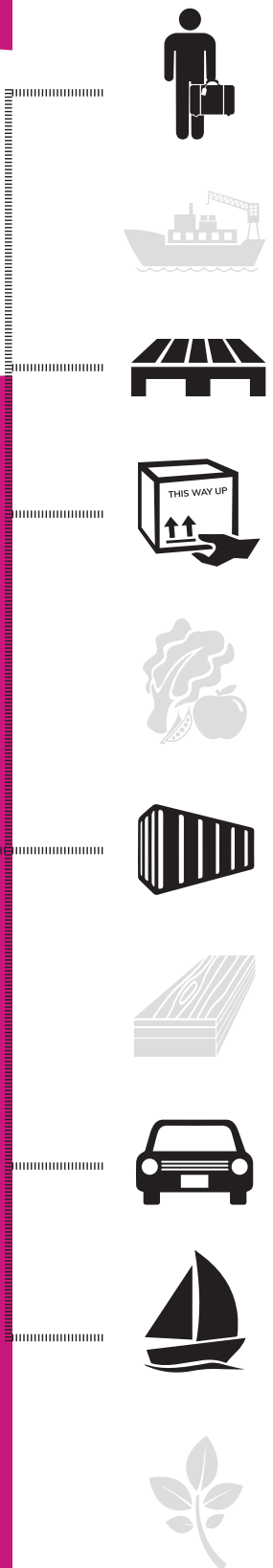


Striped antennae

Striped bands on abdomen

I CAN ENTER NZ ON:

I'm larger than NZ shield bugs and around the size of a 10c coin



BROWN MARMORATED STINK BUG

- Eastern USA (greatest risk)
- All other USA
- Europe
- China
- Korea
- Taiwan
- Japan
- Chile



IF YOU COME ACROSS ONE OF THESE:
CATCH IT! SNAP IT! REPORT IT!

0800 665 825

OR CONTACT MPI on: **0800 80 99 66**

Fruit Flies



Queensland
Fruit Fly
6–8mm long



Oriental Fruit Fly
7mm long



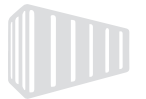
Mediterranean
Fruit Fly
6mm long



Larvae in
fruit 2mm
long

We are
all small and
colourful
flies

I CAN ENTER
NZ ON:



FRUIT FLIES

- Australia
- Pacific Islands
- South East Asia
- Mediterranean
- South America
- Africa
- USA



IF YOU COME ACROSS ONE OF THESE:
CATCH IT! SNAP IT! REPORT IT!

0800 665 825

OR CONTACT MPI on: **0800 80 99 66**

Reporting is important

10 thousand

Suspected pests and diseases are reported to the Biosecurity New Zealand hotline every year (approximately).

What happens if we don't keep watch?

6 months+

The time it could take between infection with a soil-borne disease like *Ceratocystis fimbriata* to when symptoms appear.

\$1 billion

The estimated cost of Psa to the New Zealand kiwifruit industry.

\$430 million

The potential market access impact of a fruit fly incursion in Te Puke.

Have you seen something unusual?



CATCH IT



SNAP IT



REPORT IT

To make a report call KVH on **0800 665 825**, or the Biosecurity New Zealand hotline 24 hours a day, 7 days a week on **0800 80 99 66**.

You can also make a pest or bug report through the free Find-A-Pest app.

FIND-A-PEST

COVID-19 reminded us that biosecurity requires a team effort, where all pitch in. We're kaitiaki, we're guardians, and our team of 5 million has collective responsibility for protecting what we've got from the impacts of pests and diseases.

Yellow Spotted Stink Bug



Blackish-brown and covered with small yellow spots

SIZE
Up to 23mm long

I'm larger than NZ shield bugs and around the size of a 10c coin

I CAN ENTER NZ ON:



YELLOW SPOTTED STINK BUG
– Japan – China – Vietnam – Taiwan

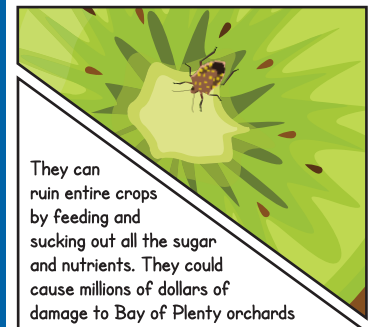
! IF YOU COME ACROSS ONE OF THESE:
CATCH IT! SNAP IT! REPORT IT!
0800 665 825
OR CONTACT MPI on: 0800 80 99 66

December / 23

New Zealand's kiwifruit growing community is committed to biosecurity excellence

MONDAY	TUESDAY	WEDNESDAY	THURSDAY	FRIDAY	SATURDAY	SUNDAY
27	28	29	30	1	2	3
4	5	6	7	8	9	10
11	12	13	14	15	16	17
18	19	20	21	22	23	24
25	26	27	28	29	30	31

• Christmas Day • Boxing Day • Term 4 ends • Christmas Eve • New Year's Eve



They can ruin entire crops by feeding and sucking out all the sugar and nutrients. They could cause millions of dollars of damage to Bay of Plenty orchards



They get into new countries by hiding in cars being transported, people's luggage, or mail



If they get crushed or are disturbed they let off a horrible smell



Come on guys, get in their way and all over their food

KO TĀTOU
THIS IS US BIOSECURITY 2025

BIOSECURITY THREAT CHART

HIGH-RISK ENTRY MONTHS	JAN	FEB	MAR	APR	MAY	JUN	JUL	AUG	SEP	OCT	NOV	DEC
White Peach Scale												
Asian Giant Hornet												
Spotted Lanternfly												
Fall Armyworm												
Spongy Moth												
Yellow Peach Moth												
Brown Marmorated Stink Bug												
Fruit Flies												
Yellow Spotted Stink Bug												

A KIWIFRUIT GROWING COMMUNITY COMMITTED TO BIOSECURITY EXCELLENCE

*We can all keep unwanted pests
and diseases out of New Zealand.*

Pests and diseases from offshore can cause serious harm to our kiwifruit orchards and businesses, as well as New Zealand's unique environment and primary industries.

That's why KVH works across the kiwifruit industry, with everyone involved in growing and selling New Zealand kiwifruit, to pursue biosecurity resilience for all.

This calendar features our most unwanted pests. Our best chance at keeping them from establishing in our orchards includes surveillance among people who know what to look for and can identify and report them, should they arrive.

By working together, we can help protect New Zealand's kiwifruit industry from unwanted biosecurity risks.

kvh.org.nz | Tel: 0800 665 825 | Email: info@kvh.org.nz



IF YOU COME ACROSS ANY OF THE PESTS FEATURED IN THIS CALENDAR:
CATCH IT! SNAP IT! REPORT IT! 0800 80 99 66

